



Project Ninfea (Clean That Mess Up)

con la partecipazione di



IL TEAM



Caterina Caffari
Ingegneria Edile-Architettura



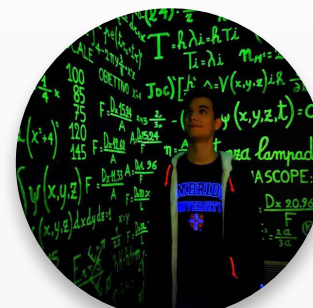
Giovanni Margheriti
Ingegneria Aerospaziale



Samuele Sabella
Informatica



Aldo D'Aquino
Informatica



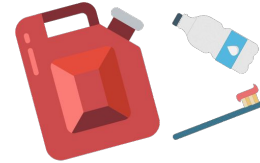
Gabriele Pappalardo
Informatica

LO SCOPO

Una grande quantità di plastica si sta concentrando sulla costa, e si sta accumulando in un'isola artificiale che si disintegra in **microplastica**.

La microplastica viene mangiata dai plancton finendo così nella catena alimentare del mare. Questo circolo "termina" con l'ingerimento da parte dell'uomo di alimenti contenenti microplastica, **causando danni**.

Il nostro scopo è quello di filtrare e raccogliere le **microplastiche**.



Meso/Macro-plastic
($>4.76\text{mm}$)



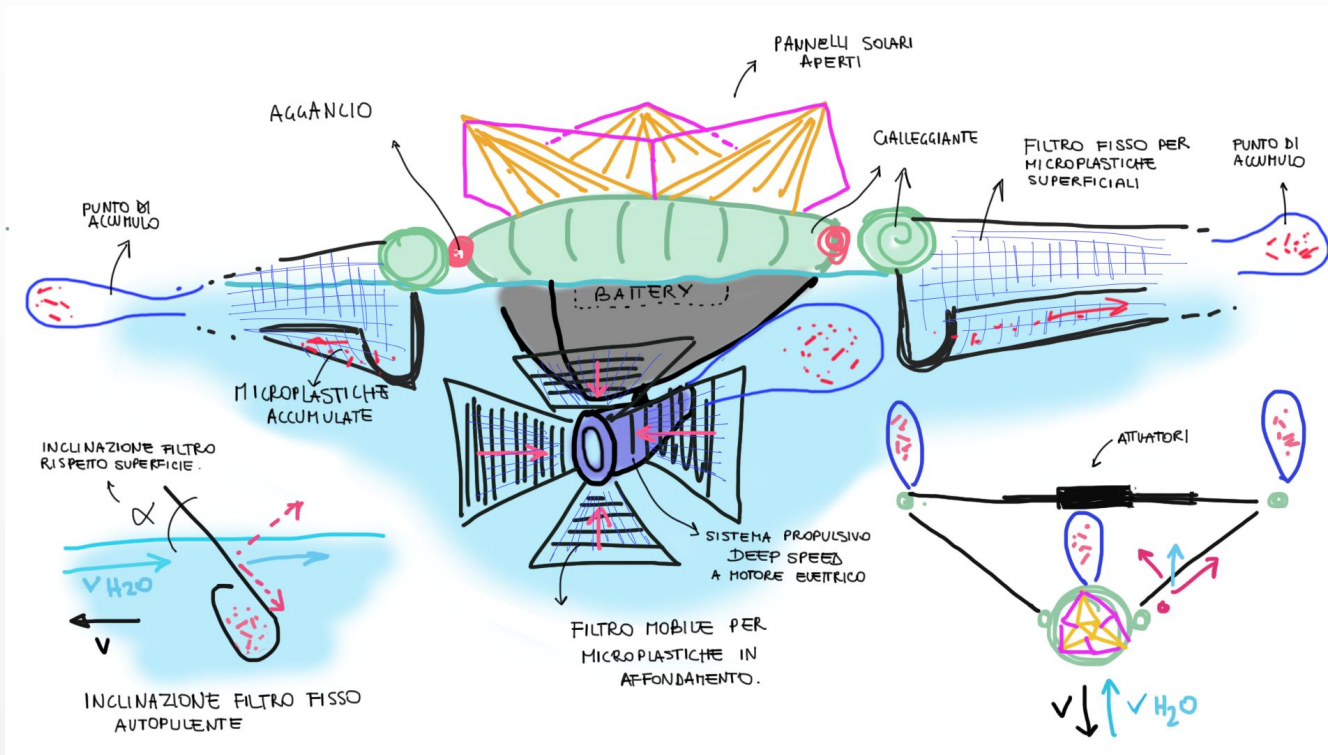
Micro-plastic ★
($<4.75\text{mm}$ and $>1.0\text{mm}$)



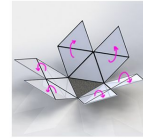
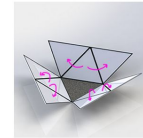
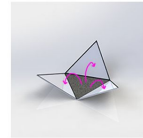
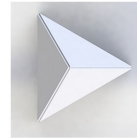
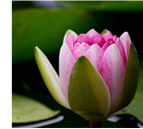
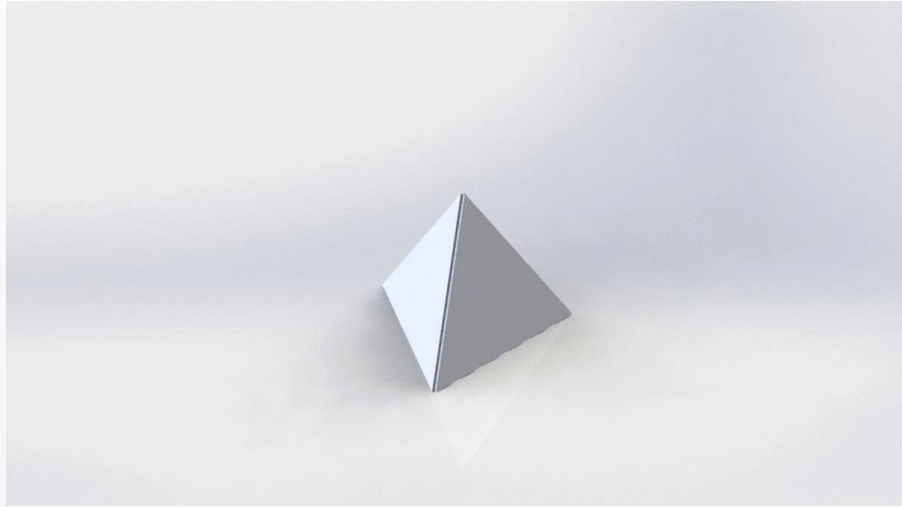
Nano-plastic
($\sim 20\mu$)



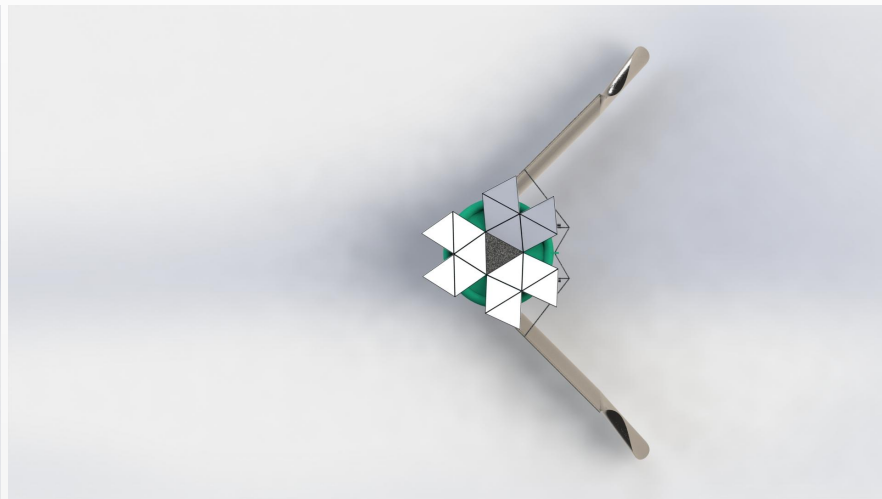
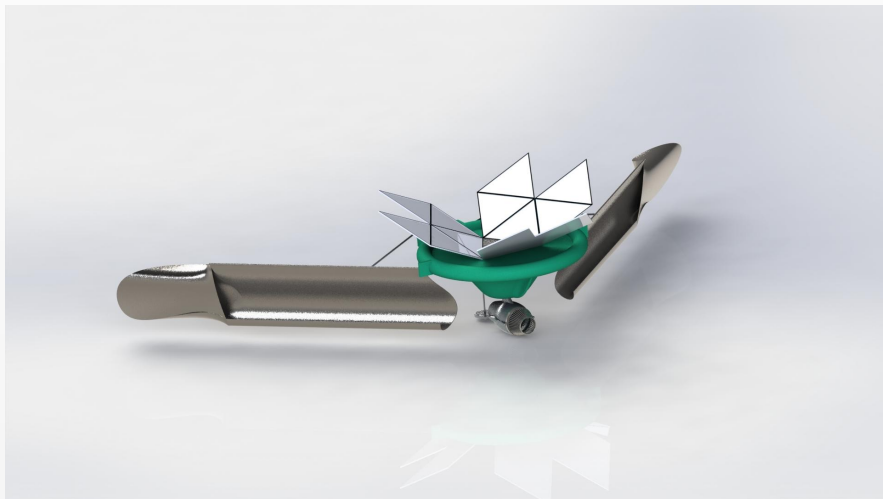
L'IDEA



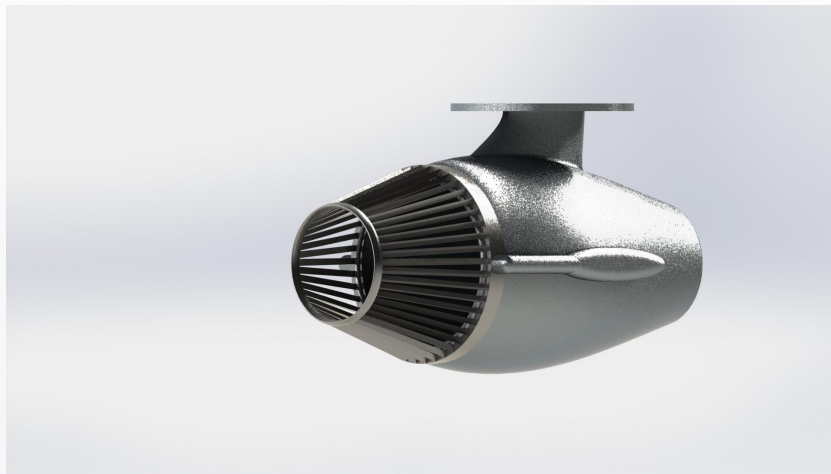
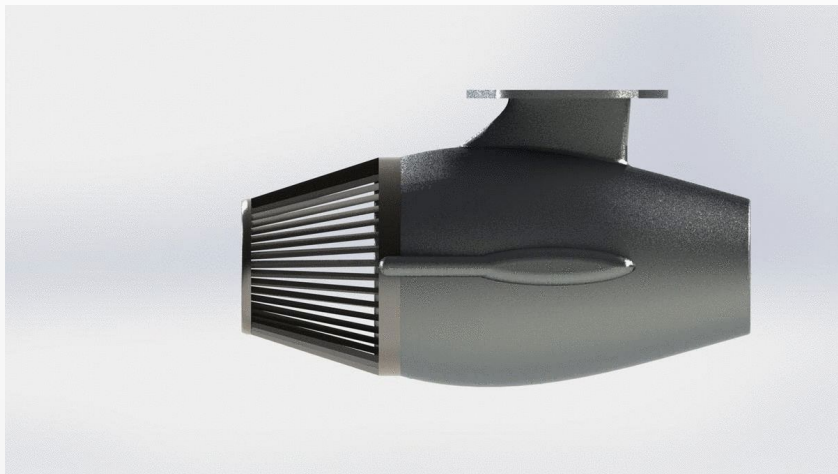
NINFEE-BOT



NINFEE-BOT (2)

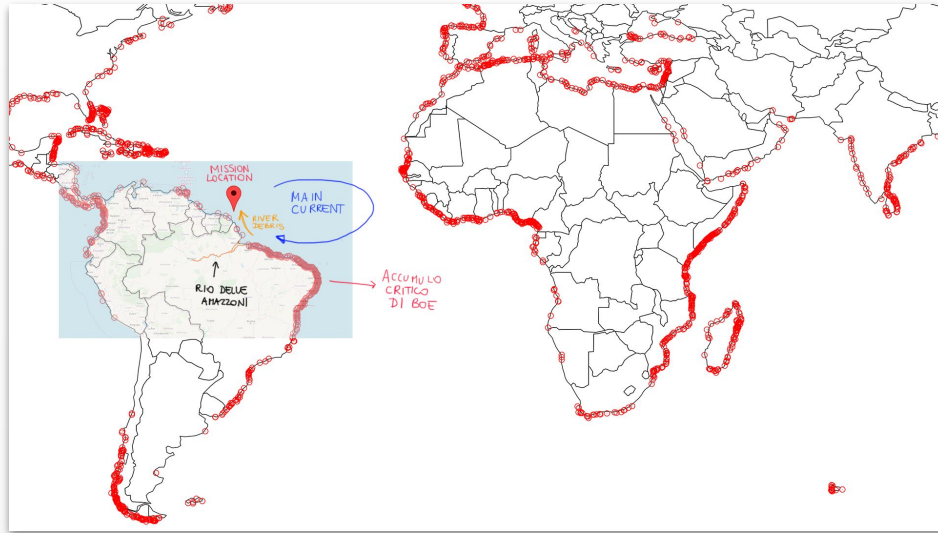


NINFEE-BOT (3)



Il motore reale, senza filtri, è realizzato e progettato da **DeepSpeed**: <https://deepspeed.it>

DATI NASA



Source: OSMC - NOAA - <https://bit.ly/2N1hZ7E>
NASA SVS Garbage Patch - <https://go.nasa.gov/2O7tyJM>
Open Street Map: <https://www.openstreetmap.org>



Link to **GitHub** project: <https://github.com/daquinoaldo/CleanThatMessUp>



DATI NASA (2)



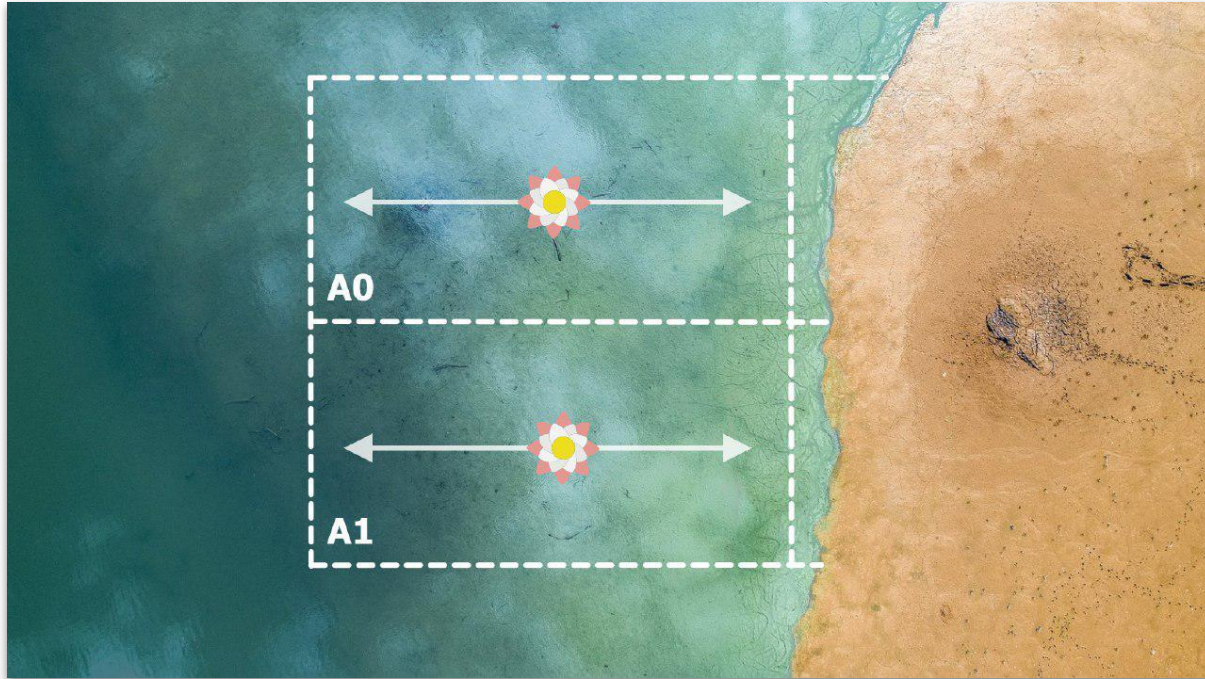
Source: OSMC - NOAA - <https://bit.ly/2N1hZ7E>
NASA SVS Garbage Patch - <https://go.nasa.gov/2O7tyJM>
Open Street Map: <https://www.openstreetmap.org>



Link to **GitHub** project: <https://github.com/daquinoaldo/CleanThatMessUp>



PATH PERCORSO



RINGRAZIAMO

- **Alessio Cicarelli:** prof. al dipartimento di Chimica Industriale
- **Lorenzo Ferrari:** ricercatore presso dipartimento di Ingegneria dell'Energia, dei Sistemi, del Territorio e delle costruzioni
- **Marco Gipo Ghimenti:** prof. al dipartimento di matematica.
- **Renato Iannelli:** professore ordinario al dipartimento di Ingegneria dell'Energia, dei Sistemi, del Territorio e delle costruzioni
- **Andrea Andreucci:** professore al dipartimento di Biologia

Artworks made with  by **Clean That Mess Up**

GRAZIE MILLE!

